

Total Maximum Daily Load

Designated Streams in the

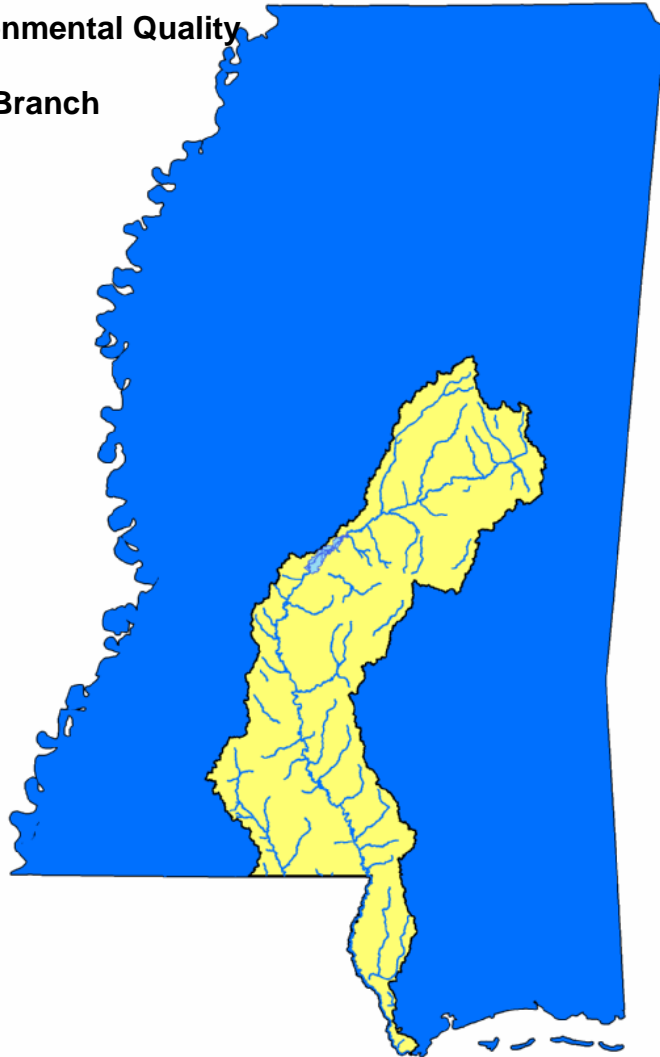
Pearl River Basin

for
Impairment Due to Sediment

Prepared By

Mississippi Department of Environmental Quality
Office of Pollution Control
Standards, Modeling, and TMDL Branch

MDEQ
P.O. Box 2261
Jackson, MS 39225
(601) 961-5171
www.deq.state.ms.us



FOREWORD

This report contains one or more Total Maximum Daily Loads (TMDLs) for water body segments found on Mississippi's 1996 Section 303(d) List of Impaired Waterbodies. Because of the accelerated schedule required by the consent decree, many of these TMDLs have been prepared out of sequence with the State's rotating basin approach. The implementation of the TMDLs contained herein will be prioritized within Mississippi's rotating basin approach.

The amount and quality of the data on which this report is based are limited. As additional information becomes available, the TMDLs may be updated. Such additional information may include water quality and quantity data, changes in pollutant loadings, or changes in landuse within the watershed. In some cases, additional water quality data may indicate that no impairment exists.

Conversion Factors

To convert from	To	Multiply by	To convert from	To	Multiply by
mile ²	acre	640	acre	ft ²	43560
km ²	acre	247.1	days	seconds	86400
m ³	ft ³	35.3	meters	feet	3.28
ft ³	gallons	7.48	ft ³	gallons	7.48
ft ³	liters	28.3	hectares	acres	2.47
cfs	gal/min	448.8	miles	meters	1609.3
cfs	MGD	0.646	tonnes	tons	1.1
m ³	gallons	264.2	µg/l * cfs	gm/day	2.45
m ³	liters	1000	µg/l * MGD	gm/day	3.79

Fraction	Prefix	Symbol	Multiple	Prefix	Symbol
10 ⁻¹	deci	d	10	deka	da
10 ⁻²	centi	c	10 ²	hecto	h
10 ⁻³	milli	m	10 ³	kilo	k
10 ⁻⁶	micro	µ	10 ⁶	mega	M
10 ⁻⁹	nano	n	10 ⁹	giga	G
10 ⁻¹²	pico	p	10 ¹²	tera	T
10 ⁻¹⁵	femto	f	10 ¹⁵	peta	P
10 ⁻¹⁸	atto	a	10 ¹⁸	exa	E

CONTENTS

TMDL INFORMATION	v
EXECUTIVE SUMMARY	viii
1.0 INTRODUCTION	1
1.1 Background.....	1
1.2 Applicable Water Body Segment Use	1
1.3 Applicable Water Body Segment Standard	1
2.0 TMDL ENDPOINT AND WATER QUALITY ASSESSMENT	5
2.1 Selection of a TMDL Endpoint and Critical Condition.....	5
3.0 SOURCE ASSESSMENT and LOAD ESTIMATION	6
3.1 Assessment of Point Sources	6
3.2 Assessment of Nonpoint Sources	7
3.3 Existing Load Estimation.....	10
4.0 DETERMINING THE TARGET SEDIMENT LOAD	11
4.1 Selecting a Reference Condition (Simon, et al., 2002a).....	11
4.2 Analysis of Available Suspended-Sediment Data (Simon, et al., 2002a)	13
4.3 Target Sediment Yields	14
5.0 ALLOCATION.....	16
5.1 Wasteload Allocations	16
5.2 Load Allocations.....	16
5.3 Incorporation of a Margin of Safety (MOS).....	17
5.4 Calculation of the TMDL	17
5.5 Seasonality	18
6.0 CONCLUSION.....	19
6.1 Next Steps.....	18
6.2 Public Participation.....	20
DEFINITIONS.....	21
ABBREVIATIONS	27
REFERENCES	28

FIGURES

Figure 1. Location of Pearl River Basin.....	2
Figure 2. Location of the Pearl River Basin §303(d) Listed Segments (Northern Portion).....	3
Figure 3. Location of the Pearl River Basin §303(d) Listed Segments (Southern Portion).....	4
Figure 4. Pearl River Basin Landuse Distribution	8
Figure 5. Six Stages of Channel Evolution (Simon and Hupp, 1986)	12
Figure 6. Pearl River Basin with Level III Ecoregions	14

TABLES

Table i. Water Body Listing Information.....	v
Table ii. Water Quality Standard	vii
Table iii. Total Maximum Daily Loads.....	vii
Table 1. Unstable Stream Sediment Yield Ranges for Level III Ecoregions within the Pearl River Basin	ix
Table 2. Pearl River Basin MS4 Permits	7
Table 3. Pearl River Basin Landuse Distribution (in acres)	8
Table 4. §303(d) Listed Segments with Appropriate Level III Ecoregion	9
Table 5. Unstable Stream Sediment Yield Ranges for Level III Ecoregions within the Pearl River Basin	9
Table 6. Stable Stream Sediment Yield Range for Level III Ecoregions within the Pearl River Basin	13
Table 7. TMDL Yields.....	16

TMDL INFORMATION

Table i. Water Body Listing Information

ID	Name	County	Cause	Mon./ Eval.
513811	Bahala Creek	Copiah	Biological Impairment due to Sediment	Monitored
Near Tyrus: From headwaters to confluence with Russell Creek				
MS159E	Big Creek	Hinds	Biological Impairment due to Sediment	Monitored
Near Byram: From headwaters to Pearl River				
MS121BE	Bogue Chitto Creek	Kemper Neshoba	Sediment	Evaluated
Near Cleveland: From headwaters to mouth at Pearl River				
MS165CE	Campbell Creek	Rankin Simpson	Biological Impairment due to Sediment	Monitored
Near D'Lo: From headwaters to mouth at Strong River				
MS151E1	Cane Creek	Rankin	Biological Impairment due to Sediment	Monitored
Near Goshen Springs: From headwaters at railroad tracks South of HWY 43 to Ross Barnett Reservoir flood pool				
MS189E	Clabber Creek	Pike	Biological Impairment due to Sediment	Monitored
Near Johnstons Station: From headwaters to the Bogue Chitto River				
MS149E	Coffee Bogue Creek	Leake Scott	Biological Impairment due to Sediment	Monitored
Near Branch: From headwaters to the Pearl River				
MS137CE	Conehatta Creek	Newton	Biological Impairment due to Sediment	Monitored
Near Hazel: From headwaters to mouth at Big Canal				
MS167DE	Dabbs Creek	Rankin Newton	Biological Impairment due to Sediment	Monitored
Near D'Lo: From headwaters to the Strong River				
MS152E	Eutacutachee Creek	Rankin	Biological Impairment due to Sediment	Monitored
Near Pelahatchie: From headwaters to Pelahatchie Creek				
MS187HE	Halbert Branch	Lincoln	Biological Impairment due to Sediment	Monitored
Near Brookhaven: From headwaters to confluence at East Bogue Chitto Creek				
MS155E	Hanging Moss Creek	Madison Hinds	Biological Impairment due to Sediment	Monitored
At Jackson: From headwaters to the Pearl River				
MS122E1	Hughes Creek	Winston	Biological Impairment due to Sediment	Monitored
At Louisville: From headwaters to County Road at Estes				
MS184JE	Juniper Creek	Pearl River	Biological Impairment due to Sediment	Monitored
Near Millard: From headwaters to confluence with Hobolochitto Creek				
MS132E	Lobutchka Creek	Winston Attala Choctaw	Biological Impairment due to Sediment	Monitored
Near Zama: From headwaters to the 133 watershed boundry				
MS120E	Nanah Waiya Creek	Winston Neshoba Kemper	Sediment	Evaluated
Near Handle: From headwaters to the Pearl River				
MS123NE	Noxapater Creek	Winston Neshoba	Sediment	Evaluated
Near Stallo: From headwaters to the Pearl River				

Table i continued. Water Body Listing Information

ID	Name	County	Cause	Mon./ Eval.
MSLMPRLRE	Pearl River	Simpson Lawrence Copiah	Sediment	Evaluated
From Confluence with Strong River to confluence with Holiday Creek				
MSLPRLRE	Pearl River	Marion Pearl River Hancock	Sediment	Evaluated
Near Morgantown: From confluence of Holiday Creek to mouth at Mississippi Sound				
MSUMPRLR1E	Pearl River	Hinds Rankin Copiah	Sediment	Evaluated
At Jackson: from Ross Barnett Reservoir spillway to confluence with Strong River				
MSUMPRLR2E	Pearl River	Leake Madison	Sediment	Evaluated
Near Pigtown: from confluence with Yockanookany River to Riverbend Campsite on Natchez Trace				
MSUPRLRE	Pearl River	Neshoba Leake	Sediment	Evaluated
From headwaters at confluence with Bogue Chitto Creek to confluence with Yockanookany River				
MS153PE	Pelahatchie Creek	Scott Rankin	Sediment	Evaluated
Near Fannin: from headwaters at Morton Creek to Ross Barnett Reservoir flood pool				
MS125PE	Pinishook Creek	Winston Neshoba	Biological Impairment due to Sediment	Monitored
Near Burnside: from headwaters to the Pearl River				
MS161E	Rhodes Creek	Hinds	Biological Impairment due to Sediment	Monitored
Near Rosemary: from headwaters to the Pearl River				
MS158E	Richland Creek	Rankin	Biological Impairment due to Sediment	Monitored
Near Richland: from headwaters to the Pearl River				
MS143E	Shockaloo Creek	Scott	Biological Impairment due to Sediment	Monitored
Near Forest: from headwaters to confluence with Little Canal				
MS191SE	Silver Creek	Pike	Biological Impairment due to Sediment	Monitored
Near Smithburg: from headwaters to Louisiana				
MSSTRONGE	Strong River	Scott Smith Simpson	Biological Impairment due to Sediment	Monitored
From headwaters in watershed 164 to confluence with Purvis Creek				
MS142E1	Tallabogue Creek	Scott	Biological Impairment due to Sediment	Monitored
Near Forest: from headwaters to the confluence with Little Canal				
MS122E	Tallahaga Creek	Neshoba Winston	Biological Impairment due to Sediment	Monitored
Near Claytown: from headwaters to Big Slough				
MS144E	Tuscolameta Creek	Scott Leake	Biological Impairment due to Sediment	Monitored
Near Walnut Grove: from confluence of Big and Little Canal to the Pearl River				

Table ii. Water Quality Standard

Parameter	Beneficial use	Narrative Water Quality Criteria
Sediment/Siltation	Aquatic Life Support	Waters shall be free from materials attributable to municipal, industrial, agricultural, or other dischargers producing color, odor, taste, total suspended solids, or other conditions in such degree as to create a nuisance, render the waters injurious to public health, recreation, or to aquatic life and wildlife, or adversely affect the palatability of fish, aesthetic quality, or impair the waters for any designated uses.

Table iii. Total Maximum Daily Loads

Ecoregion	WLA	LA	MOS	TMDL
Ecoregion 65	0.0004 to 0.0018*	0.0004 to 0.0018*	implicit	0.0004 to 0.0018*
Ecoregion 74	0.0033 to 0.0140*	0.0033 to 0.0140*	implicit	0.0033 to 0.0140*
Ecoregion 75i	0.00019 to 0.00041*	0.00019 to 0.00041*	implicit	0.00019 to 0.00041*

*tons per acre per day at the effective discharge

EXECUTIVE SUMMARY

The Pearl River Basin is a predominantly rural area with approximately 46% of the basin area classified as forest. This TMDL addresses 32 water bodies located in the Pearl River Basin that are included in the Mississippi 2006 Section 303(d) List of Water Bodies as impaired due to sediment/siltation (MDEQ, 2006b). This TMDL is being completed for clean sediment. The *State of Mississippi Water Quality Criteria for Intrastate, Interstate, and Coastal Waters* regulation does not include a numerical water quality standard for aquatic life protection due to sediment (MDEQ, 2003a). The narrative standard for the protection of aquatic life is sufficient for justification of TMDL development, but does not provide a quantifiable TMDL target. The target for this TMDL is based on reference sediment yields developed by the Channel and Watershed Processes Research Unit (CWPRU) at the National Sedimentation Laboratory (NSL).

The CWPRU developed reference sediment yields, or targets, for each level III ecoregion within Mississippi. These yields were derived from the empirical analysis of historical flow and suspended sediment concentrations for stable streams in each level III ecoregion. These targets were used by MDEQ in the development of the James Creek Sediment TMDL (MDEQ, 2003c) and many subsequent sediment TMDLs throughout the state. The methods used to develop the level III reference yields are described in detail in the reports titled “*Reference*” and “*Impacted*” *Rates of Suspended-Sediment Transport for Use in Developing Clean Sediment TMDLs: Mississippi and the Southeastern United States* (Simon, et al., 2002b) and *Actual and Reference Sediment Yields for the James Creek Watershed – Mississippi* (Simon, et al., 2002a).

The reference yields, or TMDL target, for this TMDL were derived from the empirical analysis of historical flow and suspended sediment concentrations for stable streams in the appropriate level III ecoregion for the Pearl River Basin, which are Southeastern Plains Ecoregion (65), the Mississippi Valley Loess Plains Ecoregion (74), and the Southern Coastal Plain (75).

According to 40 CFR §130.2 (i), TMDLs can be expressed in terms of mass per time, toxicity, or other appropriate measure. This TMDL is expressed as the tons of sediment that can be discharged from an acre of a subwatershed during a day (tons/acre/day) at the effective discharge and still attain the applicable water quality standard. This results in a range of acceptable reference yields in tons per acre per day at the effective discharge for each water body within the Pearl River Basin.

It is expected that all values within a range of acceptable yields will result in attainment of water quality standards. The TMDL target is expressed at the effective discharge. The effective discharge is the channel-forming flow or the flow that moves the most sediment. The effective discharge is obtained by combining flow frequency data with sediment transport relationships. The effective discharge occurs statistically once every one and a half years, not on a daily basis. However, because the effective discharge is the critical condition, compliance with the TMDL at the effective discharge will result in the attainment of the water quality standards at all times.

For many of the §303(d) listed streams in the Pearl River Basin sediment data were either not available or were insufficient to calibrate a water quality model for prediction of existing sediment loads. Therefore, this TMDL does not provide an existing load specific to each water body. A range of unstable values was assigned to the listed water bodies within the Pearl River Basin based on the level III ecoregion unstable stream values (Table 1). The unstable range is representative of the

existing loads that would be expected for unstable water bodies within the Pearl River Basin. The unstable yields are larger than the target yields, therefore, a reduction is recommended for the Pearl River Basin.

Table 1. Unstable Stream Sediment Yield Ranges for Level III Ecoregions within the Pearl River Basin

Level III Ecoregion	Unstable Streams Sediment Yield Range*
Ecoregion 65	0.002 to 0.054
Ecoregion 74	0.298 to 1.856
Ecoregion 75	0.000249 to 0.00256

*tons per acre per day at the effective discharge

1.0 INTRODUCTION

1.1 Background

The identification of water bodies not meeting their designated use and the development of total maximum daily loads (TMDLs) for those water bodies are required by Section 303(d) of the Clean Water Act (CWA) and the Environmental Protection Agency's (EPA) Water Quality Planning and Management Regulations (40 CFR part 130). The TMDL process is designed to restore and maintain the quality of those impaired water bodies through the establishment of pollutant specific allowable loads. The pollutant of concern for this TMDL is sediment from landuse runoff and in-channel sediment processes.

The water bodies included in this TMDL are located within the Pearl River Basin. The Pearl River Basin includes all or part of the following counties in central and southern Mississippi: Attala, Choctaw, Copiah, Hancock, Hinds, Jefferson Davis, Kemper, Lamar, Lawrence, Leake, Lincoln, Madison, Marion, Neshoba, Newton, Pearl River, Pike, Rankin, Scott, Simpson, Smith, Walthall, Winston. The Pearl River Basin includes approximately 4.98 million acres and contains many landuse types including forest, pastureland, and cropland areas. However, the dominant landuses within the Pearl River Basin is forest. The location of the Pearl River Basin and the §303(d) listed segments included in this TMDL are shown in Figures 1 through 3.

The 32 water bodies shown in Table i are impaired due to sediment. Nine are evaluated listings. The 23 water bodies shown as biologically impaired due to sediment were listed due to failure to meet minimum water quality criteria for biological use support based on biological sampling (MDEQ, 2003b). For these water bodies, a detailed assessment of the watershed and potential point sources, called stressor identification, was completed. The results of the stressor identification indicated that sediment was a probable primary stressor in these 23 watersheds.

1.2 Applicable Water Body Segment Use

The water use classification for all water bodies included in this TMDL, as established by the *State of Mississippi Water Quality Criteria for Intrastate, Interstate, and Coastal Waters* regulation, is Fish and Wildlife Support (MDEQ, 2003a). Waters with this classification are intended for fishing and propagation of fish, aquatic life, and wildlife. Waters that meet the Fish and Wildlife Support criteria should also be suitable for secondary contact, which is defined as incidental contact with water including wading and occasional swimming.

1.3 Applicable Water Body Segment Standard

The *State of Mississippi Water Quality Criteria for Intrastate, Interstate, and Coastal Waters* do not include a water quality standard applicable to aquatic life protection due to sediment (MDEQ, 2003a). However, a narrative standard for the protection of aquatic life was interpreted to determine an applicable target for this TMDL. The narrative standard is that waters shall be free from materials

attributable to municipal, industrial, agricultural, or other dischargers producing color, odor, taste, total suspended solids, or other conditions in such degree as to create a nuisance, render the waters injurious to public health, recreation, or to aquatic life and wildlife, or adversely affect the palatability of fish, aesthetic quality, or impair the waters for any designated uses.

Figure 1. Location of Pearl River Basin

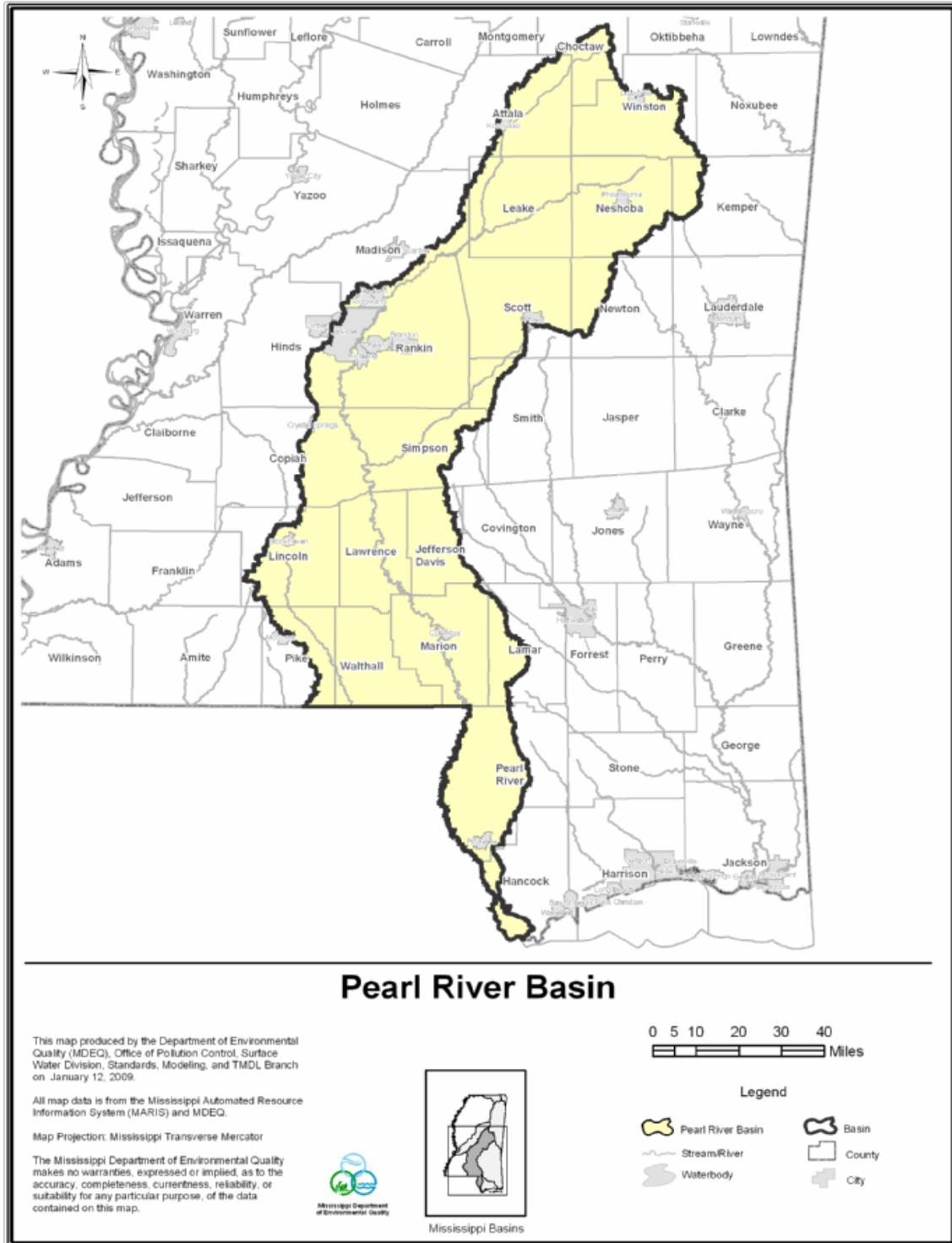
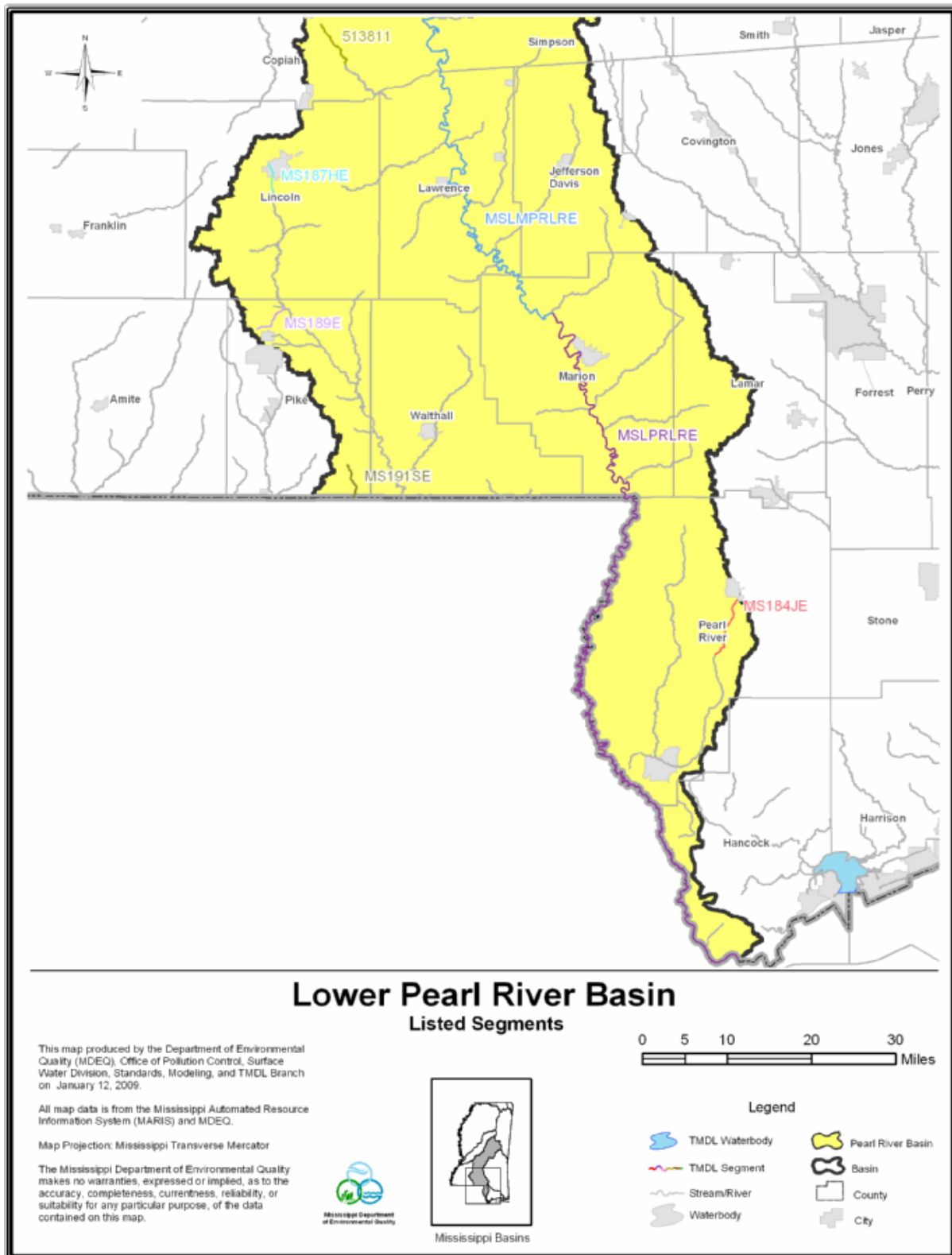


Figure 3. Location of Pearl River Basin §303(d) Listed Segments (Southern Portion)



2.0 TMDL ENDPOINT AND WATER QUALITY ASSESSMENT

2.1 Selection of a TMDL Endpoint and Critical Condition

One of the major components of a TMDL is the establishment of target endpoints, which are used to evaluate the attainment of acceptable water quality. Target endpoints, therefore, represent the water quality goals that are to be achieved by meeting the load and wasteload allocations specified in the TMDL. The endpoints allow for a comparison between observed conditions and conditions that are expected to restore designated uses.

For the water bodies included in this sediment TMDL there is an acceptable range of sediment loadings at the effective discharge of the water body. These ranges were developed from suspended sediment concentration (SSC) data measured at stable streams in the same ecoregion. The target range for the water bodies within the Pearl River Basin is based on the appropriate level III ecoregion for each water body segment. The target range for the water bodies is given in tons per acre per day at the effective discharge. The effective discharge is the discharge which moves the most sediment, or is the channel-forming flow. This discharge has been selected as the critical condition for this TMDL (Simon, et al., 2002b). If the sediment target applicable for sediment in the water body is maintained during critical conditions, then the health of the stream should improve.

3.0 SOURCE ASSESSMENT and LOAD ESTIMATION

An important part of the TMDL analysis is the identification of individual sources, source categories, or source subcategories of sedimentation in the watershed and the amount of pollutant loading contributed by each of these sources. Under the CWA, sources are broadly classified as either point or nonpoint sources. Under 40 CFR §122.2, a point source is defined as a discernable, confined, and discrete conveyance from which pollutants are or may be discharged to surface waters.

The National Pollutant Discharge Elimination System (NPDES) program regulates point source discharges. Point sources can be described by two broad categories: 1) NPDES regulated municipal and industrial wastewater treatment plants (WWTPs) and 2) NPDES regulated industrial activities, which include construction activities and municipal storm water discharges (Municipal Separate Storm Sewer Systems [MS4s]). For the purposes of this TMDL, all sources of sediment loading not regulated by NPDES permits are considered nonpoint sources.

3.1 Assessment of Point Sources

There are facilities in the Pearl River Basin with NPDES permits that are permitted for Total Suspended Solids (TSS). A list of facilities is not included because no changes are required in their permits due to this TMDL. This is considered appropriate since these sources provide negligible loadings of suspended solids to the receiving waters compared to wet weather sources (e.g., NPDES regulated construction activities, MS4s, and nonpoint sources). Also, the TSS component of a NPDES permitted facility is different from the pollutant addressed within this TMDL. The TSS component of the permitted discharges is generally composed more of organic material, and therefore, provides less direct impact on the biologic integrity of a stream (through settling and accumulation) than would stream sedimentation due to soil erosion during wet weather events. The pollutant of concern for this TMDL is sediment from landuse runoff and in-channel processes.

Sediment loadings from NPDES regulated construction activities and MS4s are considered point sources of sediment to surface waters. These discharges occur in response to storm events and are included in the WLA portion of this TMDL. As of March 2003, discharge of storm water from construction activities disturbing more than one acre must obtain an NPDES permit. The purpose of the NPDES permit is to eliminate or minimize the discharge of pollutants (sediment) from construction activities. Since construction activities at a site are of a temporary, relatively short term nature, the number of construction sites covered by the general permit varies. The target for these areas is the same range as the TMDL target for the watershed. The WLAs provided to the NPDES regulated construction activities and MS4s will be implemented as best management practices (BMPs) as specified in Mississippi's General Stormwater Permits for Small Construction, Construction, and Phase I & II MS4 permits. Properly designed and well-maintained BMPs are expected to provide attainment of water quality standards.

There are 11 MS4 permits within the Pearl River Basin. These MS4 permits are listed in Table 2.

Table 2. Pearl River Basin MS4 permits

AI ID	Agency Interest Name	City	County	Permit/ ID #
17834	Brandon, City of, MS4 Stormwater Management Program	Brandon	Rankin	MSRMS4026
17841	Flowood, City of, MS4 Stormwater Management Program	Flowood	Rankin	MSRMS4028
17828	Hinds County, MS4 Stormwater Management Program	Raymond	Hinds	MSRMS4019
17832	MDOT, MS4 Stormwater Management Program	Jackson	Hinds	MSRMS4024
17845	Madiison County Board of Supervisors, MS4 Stormwater Management Program	Canton	Madison	MSRMS4031
17802	Madison, City of, MS4 Stormwater Management Program	Madison	Madison	MSRMS4007
17833	Pearl, City of, MS4 Stormwater Management Program	Pearl	Rankin	MSRMS4025
17850	Rankin County, MS4 Stormwater Management Program	Brandon	Rankin	MSRMS4035
17843	Richland, City of, MS4 Stormwater Management Program	Richland	Rankin	MSRMS4029
17804	Ridgeland, City of, MS4 Stormwater Management Program	Ridgeland	Madison	MSRMS4009
16788	Jackson, City of, MS4 Stormwater Management Program	Jackson	Hinds	MSS049786

3.2 Assessment of Nonpoint Sources

Nonpoint loading of sediment in a water body results from the transport of the material into receiving waters by the processes of mass wasting, head cutting, gullyng, and sheet and rill erosion. Sources of sediment include:

- Agriculture
- Silviculture
- Rangeland
- Construction sites
- Roads
- Urban areas
- Mass wasting areas
- Gullies
- Surface mining
- In-channel and instream sources
- Historical landuse activities and channel alterations

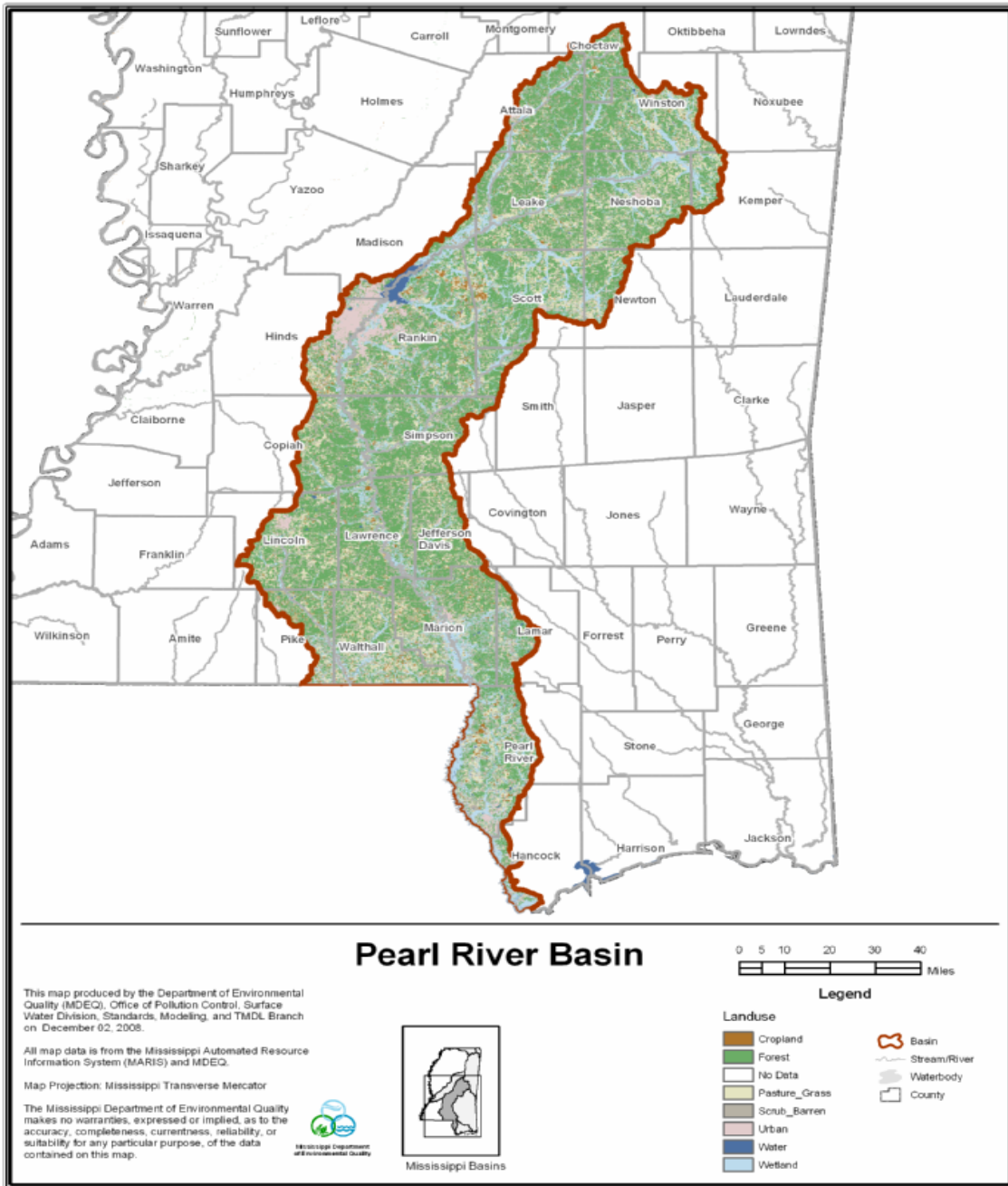
The drainage area of the Pearl River Basin contains approximately 4.98 million acres and includes many different landuse types including forest, pasture/grass, and cropland areas as shown in Table 3

and Figure 4. The dominant landuse within the watershed is forest. The landuse information given below is based on the National Land Cover Dataset (NLCD).

Table 3. Pearl River Basin Landuse Distribution (in acres)

Urban	Forest	Cropland	Pasture/Grass	Scrub/Barren	Wetland	Water	Total
342,007	2,280,806	119,362	808,605	612,687	753,549	66,298	4,983,314
6.9%	45.8%	2.4%	16.2%	12.3%	15.1%	1.3%	100.0%

Figure 4. Pearl River Basin Landuse Distribution



3.3 Existing Load Estimation

Due to lack of data for calibration it was determined that a modeling exercise to quantify the load from each source and estimate the total existing load would be ineffective. Instead an ecoregion approach was utilized to estimate existing load ranges. The CWPRU estimated the typical range for unstable streams within each level III ecoregion in the Pearl River Basin.

A range of unstable values was assigned to water bodies within the Pearl River Basin based on the level III ecoregion values (Table 3). The Pearl River Basin is located within level III ecoregions 65, 74, and level IV ecoregion 75i. Table 4 provides the water body segments included in this TMDL and the appropriate ecoregion for that segment. Table 5 provides the range of unstable values for each ecoregion in the Pearl River Basin in tons per acre per day at the effective discharge.

Table 4. §303(d) Listed Segments with Appropriate Ecoregion

Ecoregion 65	Ecoregion 74	Ecoregion 75i
MS184JE	MS189E	MSLPRLRE
MSLPRLRE	MS187HE	
MS191SE	513811	
MS232E	MSUMPRLR1E	
MS165CE	MS161E	
MS167DE	MS159E	
MSSTRONGE	MS158E	
MS152E	MS155E	
MS153PE	MSUMPRLR2E	
MS142E1		
MS143E		
MS149E		
MS137CE		
MS144E		
MSUPRLRE		
MS125PE		
MS121BE		
MS120E		
MS122E		
MS122E1		
MS123NE		
MS132E		

Table 5. Unstable Stream Sediment Yield Ranges for Level III Ecoregions within the Pearl River Basin

Level III Ecoregion	Unstable Streams Sediment Yield Range*
Ecoregion 65	0.002 to 0.054
Ecoregion 74	0.329 to 1.852
Ecoregion 75	0.000249 to 0.00256

*tons per acre per day at the effective discharge

4.0 DETERMINING THE TARGET SEDIMENT LOAD

The information and methodologies described in the following sections are based on research efforts conducted by the CWPRU of the National Sedimentation Laboratory in Oxford, Mississippi. The primary sources of the information presented in this section are:

- *Actual and Reference Sediment Yields for the James Creek Watershed – Mississippi* (Simon, et al., 2002a)
- *“Reference” and “Impacted” Rates of Suspended-Sediment Transport for Use in Developing Clean Sediment TMDLs: Mississippi and the Southeastern United States* (Simon, et al., 2002b)

4.1 Selecting a Reference Condition (Simon, et al., 2002a)

Sediment loads (transport rates) in streams vary by orders of magnitude over time and by location. Controls such as geology and channel-boundary materials, land use, channel stability, and the type and timing of precipitation events make prediction of sediment loads difficult and complex. Still, in order to determine the amount of sediment that impairs a given waterbody (TMDL), one must first be able to determine the sediment load that would be expected in an unimpaired stream of a given type and location. However, baseline conditions of flow, sediment concentrations, and transport rates for streams in the wide variety of physiographic provinces and under a wide variety of land uses are poorly understood.

There is no reason to assume that “natural” or background rates of sediment transport will be consistent from one region to another. Within the context of clean sediment TMDLs, it follows that there is no reason to assume that “target” values should be consistent on a nationwide basis. Similarly, there is no reason to assume that channels within a given region will have consistent rates of sediment transport. For example, unstable channel systems or those draining disturbed watersheds will produce and transport more sediment than stable channel systems in the same region. This reflects differences in the magnitude and perhaps type of erosion processes that dominate a subwatershed or stream reach.

To be useful for TMDL practitioners sediment transport relations must be placed within a conceptual and analytic framework such that they can be used to address sediment-related problems at sites where no such data exist. To accomplish this, sediment transport characteristics and relations need to be regionalized according to attributes of channels and drainage basins that are directly related to sediment production, transport, and potential impairment. In a general way, these attributes include among others, physiography, geology, climate and ecology, differentiated collectively as an ecoregion.

In order to identify those sediment transport conditions that represent impacted or impaired conditions, it is essential to first be able to define a non-disturbed, stable, or “reference” condition for the particular stream reach. In some schemes the

“reference” condition simply means “representative” of a given category of classified channel forms or morphologies and as such, may not be analogous with a “stable”, “undisturbed”, or “background” rate of sediment production and transport.

The Rosgen (1985) stream classification system is widely used to describe channel form. In this classification system, stream types D, F, and G are by definition, unstable (Rosgen, 1996). These stream reaches, therefore, would be expected to produce and transport enhanced amounts of sediment and represent “impacted”, if not “impaired” conditions. Thus, although it may be possible to define a “representative” reach of stream types D, F, and G, for the purpose of TMDL development, a “reference” condition transporting “natural” or “background” rates of sediment will be difficult to find.

As an alternative scheme for TMDL practitioners, the channel evolution framework set out by Simon and Hupp (1986) is proposed (Figure 5). In most alluvial channels, disruption of the dynamic equilibrium generally results in a certain degree of upstream channel degradation and downstream aggradation. If the predisturbed channel is considered as the initial stage (stage I) of channel evolution and the disrupted channel as an instantaneous condition (stage II), rapid channel degradation can be considered stage III. Degradation flattens channel gradients and consequently reduces the available stream power for given discharges with time. Concurrently, bank heights are increased and bank angles are often steepened by fluvial undercutting and by pore-pressure induced bank failures near the base of the bank. Thus, the degradation stage (stage III) is directly related to destabilization of the channel banks and to channel widening by mass-wasting processes (stage IV) once bank heights and angles exceed the critical conditions of the bank material (as determined by shear-strength characteristics).

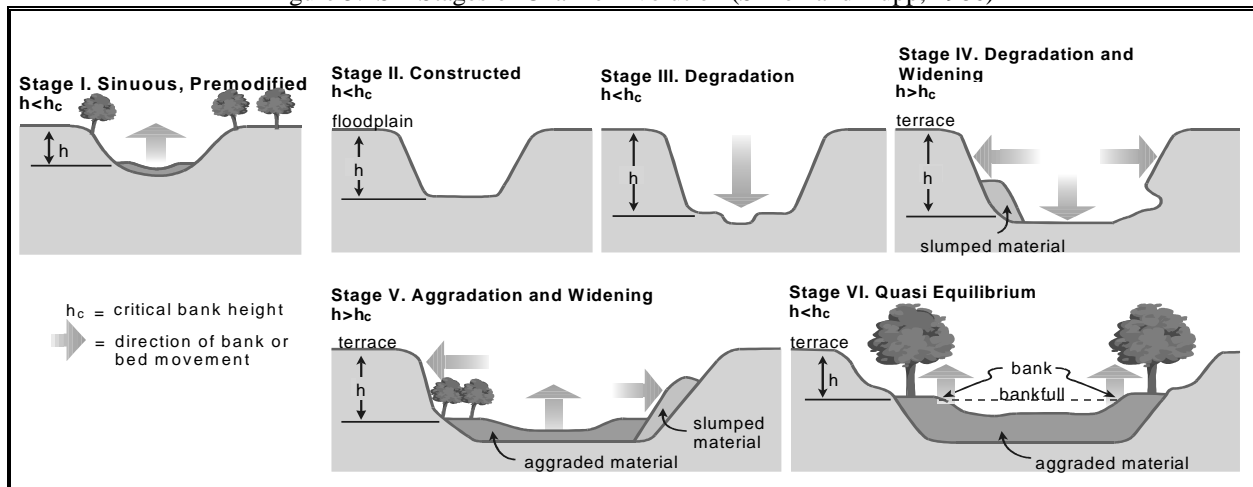
As degradation migrates further upstream, aggradation (stage V) becomes the dominant trend in previously degraded downstream sites because the flatter gradient and lower hydraulic radius at the degraded site cannot transport the heightened sediment loads originating from degrading reaches upstream. This secondary aggradation occurs at rates roughly 60% less than the associated degradation rate (Simon and Hupp, 1992). These reduced aggradation rates indicate that bed-level recovery will not be complete and that attainment of a new dynamic equilibrium will take place through (1) further channel widening, (2) the establishment of riparian vegetation that adds roughness elements and reduces the stream power for given discharges, and (3) further gradient reduction by meander extension and elongation.

The lack of complete bed-level recovery often results in a two-tiered channel configuration with the original floodplain surface becoming a terrace. Flood flows are, therefore, constrained within this enlarged channel below the terrace level. Without proliferation of riparian vegetation within the channel, this results in a given flow having greater erosive power than if an equivalent flow could dissipate energy by spreading across the floodplain. Where vegetation does re-establish, the

additional roughness limits the erosive power of flood events within the incised channel and constrains shear-stress values to near bankfull levels. Aggrading conditions (stage V) are also common in reaches downstream from the area of maximum disturbance immediately after the disturbance is imposed on the stream channel.

With stages of channel evolution tied to discrete channel processes and not strictly to specific channel shapes, they have been successfully used to describe systematic channel-stability processes over time and space in diverse environments subject to various disturbances such as stream response to: channelization in the Southeast US Coastal Plain; volcanic eruptions in the Cascade Mountains; and dams in Tuscany, Italy (Rinaldi and Simon, 1998). Because the stages of channel evolution represent shifts in dominant channel processes, they are systematically related to suspended-sediment and bed-material discharge (Simon, 1989; Kuhnle and Simon, 2000), fish-community structure, rates of channel widening (Simon and Hupp, 1992), and the density and distribution of woody riparian vegetation (Hupp, 1992).

Figure 5. Six Stages of Channel Evolution (Simon and Hupp, 1986)



An advantage of a process-based channel-evolution scheme for use in TMDL development is that Stages I and VI represent two true “reference” conditions. In some cases, channels are unlikely to recover to Stage I, pre-modified conditions. Stage VI, re-stabilized conditions are a more likely target under the present regional landuse and altered hydrologic regimes and can be used as a “reference” condition. However, in pristine areas where disturbances have not occurred or where they are far less severe, Stage I conditions can be used as a “reference” condition.

4.2 Analysis of Available Suspended-Sediment Data (Simon, et al., 2002a)

Analysis of suspended-sediment transport data involves establishing a relation between flow and sediment concentration or load. Instantaneous concentration data combined with either an instantaneous flow value or flow data representing the value obtained from the stage-discharge relation at 15-minute intervals are best. Mean daily values of both flow and sediment loads, which are readily available from the

USGS, tend to be biased towards lower flows, particularly in flashy basins. For establishing sediment transport rating relations, instantaneous concentration and 15-minute flow data were used from USGS and ARS gauging station records.

Because the “effective discharge” is that discharge or range of discharges that shape channels and perform the most geomorphic work (transport the most sediment) over the long term, it can serve as a useful indicator of regional suspended-sediment transport conditions for “reference” and impacted sites. The effective discharge is obtained by combining flow frequency data with sediment transport relationships. In many parts of the United States, the effective discharge is approximately equal to the peak flow that occurs about every 1.5 years ($Q_{1.5}$) and may be analogous to the bankfull discharge in stable streams.

The recurrence interval for the effective discharge was calculated for 10 streams in Mississippi. Calculating the effective discharge is a matter of integrating a flow-frequency curve with a sediment transport rating to obtain the discharge (range of discharges) that transports the most sediment. This was accomplished at 10 sites where the complete 15-minute flow record was easily obtainable. For the 10 streams analyzed in Mississippi, the $Q_{1.5}$ is on average, a good approximation. Therefore, the $Q_{1.5}$ was used as a measure of establishing the effective discharge at all sites.

The effective discharge ($Q_{1.5}$) was determined for all sites where the instantaneous sediment concentration data were available. This discharge was then applied to the sediment transport relation to obtain the sediment load at the effective discharge. To normalize the data for differences in basin size, the sediment load was divided by drainage area to obtain sediment yield (in tons/acre/day).

4.3 Target Sediment Yields

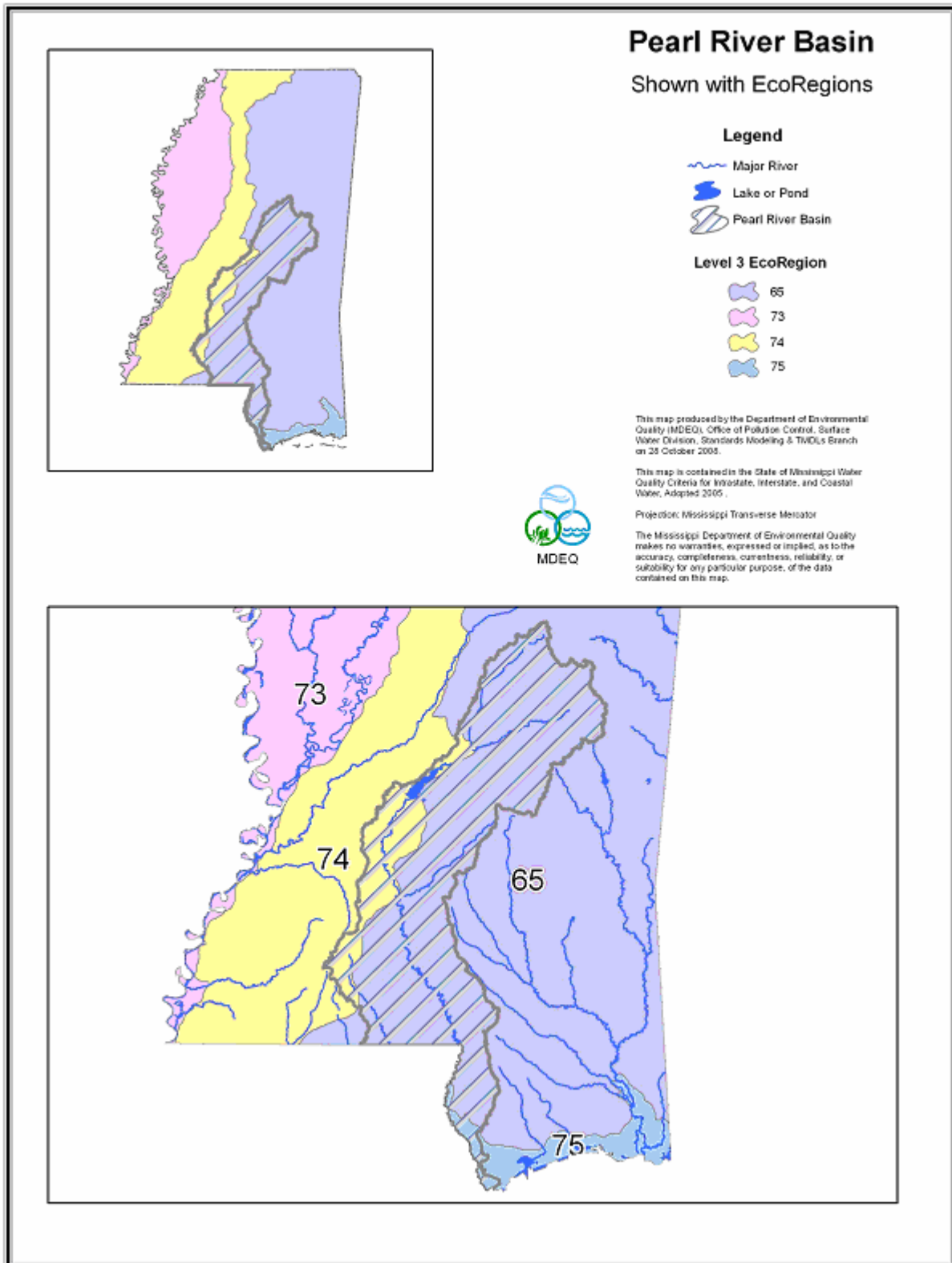
Target values for suspended-sediment are based on the concept that stable channel conditions can be represented by channel evolution Stages I and VI. Therefore, the effective discharge sediment yields for Stage I and VI in a given ecoregion represent background or natural transport rates (Simon, et al., 2002b). The targeted sediment yield for an ecoregion is based on the sediment yield values obtained for Stage I and VI sites within that ecoregion. A range of stable values was assigned water bodies within the Pearl River Basin based on the level III ecoregion values (Table 6). The Pearl River Basin is located within level III ecoregions 65, 74, and level IV ecoregion 75i as shown in Figure 6.

Table 6. Stable Stream Sediment Yield Ranges for Ecoregions within the Pearl River Basin

Ecoregion	Stable Streams Sediment Yield Range*
Ecoregion 65	0.0004 to 0.0018
Ecoregion 74	0.0033 to 0.0140
Ecoregion 75i	0.00019 to 0.00041

*tons per acre per day at the effective discharge

Figure 6. Pearl River Basin with Level III EcoRegions



5.0 ALLOCATION

The allocation for this TMDL involves a wasteload allocation (WLA) for permitted sources, a load allocation (LA) for unpermitted nonpoint sources, and an implicit margin of safety (MOS), which should result in attainment of water quality standards in the Pearl River Basin. According to 40 CFR §130.2 (i), TMDLs can be expressed in terms of mass per time, toxicity, or other appropriate measure. This TMDL is expressed as the tons of sediment that can be discharged from an acre of a subwatershed during a day (tons/acre/day) at the effective discharge and still attain the applicable water quality standard. It is appropriate to apply the same target yield to permitted (WLA) and unpermitted (LA) watershed areas. For load TMDLs the WLA and LA are summed to calculate the TMDL. Because this TMDL is expressed as a yield, as long as all activities, permitted or unpermitted, meet the same yield, the TMDL yield will be met, regardless of the relative load contribution. The methods used to develop these values are described in detail in the reports titled, “*Reference and Impacted Rates of Suspended-Sediment Transport for Use in Developing Clean Sediment TMDLs: Mississippi and the Southeastern United States* (Simon, et al., 2002b) and *Actual and Reference Sediment Yields for the James Creek Watershed – Mississippi* (Simon, et al., 2002a).

5.1 Wasteload Allocations

The contribution from wastewater treatment facilities was considered negligible in the development of this TMDL. The TSS component of any NPDES permitted facility is different from the pollutant addressed within this TMDL. The pollutant of concern for this TMDL is sediment from landuse runoff and in-channel processes, consistent with discharges associated with construction activities and MS4s.

Sediment loadings from NPDES regulated construction activities and MS4s are considered point sources of sediment to surface waters. These discharges occur in response to storm events and are included in the WLA of this TMDL as the same target yield as the TMDL in tons per acre per day at the effective discharge.

5.2 Load Allocations

The LA developed for this TMDL is an estimation of the acceptable contribution of all nonpoint sources in the watershed. Channel processes and upland sources both contribute to the sediment loading of the water body. Examples of potential nonpoint sources of sediment include agricultural activities, silviculture activities, surface mining activities, gullies, in-channel and instream sources, roads, and construction activities not regulated by NPDES permits.

Mississippi has a voluntary (non-regulated) BMP program for forestry. The program began in 1988 when MDEQ requested that the Mississippi Forestry Commission (MFC) coordinate the development of voluntary BMPs for forestry in Mississippi. The BMP guidelines were approved by MDEQ and EPA Region 4. These guidelines have been published in the handbook, *Mississippi's BMPs: Best Management Practices for Forestry in Mississippi* (MFC, 2000). Forested areas that are subject to silviculture activities may exhibit elevated sediment contributions if voluntary BMPs for forestry in Mississippi are not implemented.

MFC recently conducted the 2003 BMP Implementation Survey in November 2002 through July 2003. A total of 258 sites having recent silviculture activity were randomly selected to evaluate the voluntary implementation of BMPs. These sites were also evaluated for the presence of a significant risk to water quality. The results of the survey indicated that 89% of the BMPs applicable to the survey sites were implemented in accordance with the BMP handbook (MFC, 2004).

BMPs, as outlined in Mississippi’s *BMPs: Best Management Practices for Forestry in Mississippi* (MFC, 2000), *Planning and Design Manual for the Control of Erosion, Sediment, and Stormwater* (MDEQ, et. al, 1994), and *Field Office Technical Guide* (NRCS, 2000) would be the most effective means of reducing the load from a majority of potential upland sources.

For the water bodies within the Pearl River Basin to attain the applicable narrative water quality standard for sediment, the allowable range of sediment loads is 0.0004 to 0.0018 tons per acre per day at the effective discharge for water bodies in ER65, 0.0033 to 0.0140 tons per acre per day at the effective discharge for water bodies in ER74, and 0.00019 to 0.00041 tons per acre per day at the effective discharge for water bodies in ER75i.

5.3 Incorporation of a Margin of Safety (MOS)

The two types of MOS development are to implicitly incorporate the MOS using conservative assumptions or to explicitly specify a portion of the total TMDL as the MOS. The MOS selected for this TMDL is implicit. The use of conservative procedures provides a sufficient implicit MOS. These conservative procedures include the use of a stable stream as the target and the use of the effective discharge flow, the flow that produces the most sediment transport.

5.4 Calculation of the TMDL

As stated above, the pollutant of concern for this TMDL is sediment from landuse runoff and in-channel processes. The LA includes the contributions from the channel and surface runoff from the watershed. The MOS for this TMDL is implicit and derived from the conservative assumptions incorporated into this methodology. This TMDL, expressed as an acceptable range of sediment yields, is the same for the WLA, LA, and TMDL. For load TMDLs the WLA and LA are summed to calculate the TMDL. Because this TMDL is expressed as a yield, as long as all activities, permitted or unpermitted, meet the same yield as shown in Table 7, the TMDL yield will be met, regardless of the relative load contribution.

Table 7. TMDL Yields

Ecoregion	WLA	LA	MOS	TMDL
Ecoregion 65	0.0004 to 0.0018*	0.0004 to 0.0018*	Implicit	0.0004 to 0.0018*
Ecoregion 74	0.0033 to 0.0140*	0.0033 to 0.0140*	Implicit	0.0033 to 0.0140*
Ecoregion 75i	0.00019 to 0.00041*	0.00019 to 0.00041*	Implicit	0.00019 to 0.00041*

*tons per acre per day at the effective discharge

5.5 Seasonality

The use of data collected throughout the year at multiple stations in each ecoregion to set the target addresses seasonal variation. Instantaneous flow and suspended-sediment data were used to develop the TMDL targets for each ecoregion. These data were collected throughout the year and would account for all seasons of the calendar year, changing atmospheric conditions (including rainy and dry seasons and high and low temperatures), and the periods representative of critical conditions.

6.0 CONCLUSION

The acceptable ranges of sediment yields for water bodies within the Pearl River Basin were estimated to be 0.0004 to 0.0018 tons per acre per day at the effective discharge for level III ecoregion 65, 0.0033 to 0.0140 tons per acre per day at the effective discharge for level III ecoregion 74, and 0.00019 to 0.00041 tons per acre per day at the effective discharge for level IV ecoregion 75i. The estimated existing range for these water bodies is 0.002 to 0.054 tons per acre per day at the effective discharge for level III ecoregion 65, 0.298 to 1.856 tons per acre per day at the effective discharge for level III ecoregion 74, and 0.000249 to 0.00256 tons per acre per day at the effective discharge for level IV ecoregion 75i. The estimated existing range is larger than the TMDL range. Therefore, it is recommended that water bodies within the Pearl River Basin be considered a priority for streambank and riparian buffer zone restoration and any sediment reduction BMPs, especially for the road crossings, agricultural activities, and construction activities. The implementation of these BMP activities should reduce the sediment load to water bodies within the Pearl River Basin. The reduction of the sediment load to water bodies within the Pearl River Basin to equal that of a relatively stable stream will allow the streams to approach stable conditions. This will provide improved habitat for the support of aquatic life in the water bodies and will result in the attainment of the applicable water quality standards.

6.1 Next Steps

MDEQ's Basin Management Approach and Nonpoint Source Program emphasize restoration of impaired waters with developed TMDLs. During the watershed prioritization process to be conducted by the Pearl River Basin Team, this TMDL will be considered as a basis for implementing possible restoration projects. The basin team is made up of state and federal resource agencies and stakeholder organizations and provides the opportunity for these entities to work with local stakeholders to achieve quantifiable improvements in water quality. Together, basin team members work to understand water quality conditions, determine causes and sources of problems, prioritize watersheds for potential water quality restoration and protection activities, and identify collaboration and leveraging opportunities. The Basin Management Approach and the Nonpoint Source Program work together to facilitate and support these activities.

The Nonpoint Source Program provides financial incentives to eligible parties to implement appropriate restoration and protection projects through the Clean Water Act's Section 319 Nonpoint Source (NPS) Grant Program. This program makes available around \$1.6M each grant year for restoration and protections efforts by providing a 60% cost share for eligible projects.

Mississippi Soil and Water Conservation Commission (MSWCC) is the lead agency responsible for abatement of agricultural NPS pollution through training, promotion, and installation of BMPs on agricultural lands. USDA Natural Resource Conservation Service (NRCS) provides technical assistance to MSWCC through its conservation districts located in each county. NRCS assists animal producers in developing nutrient management plans and grazing management plans. MDEQ, MSWCC, NRCS, and other governmental and nongovernmental organizations work closely together to reduce agricultural runoff through the Section 319 NPS Program.

Mississippi Forestry Commission (MFC), in cooperation with the Mississippi Forestry Association (MFA) and Mississippi State University (MSU), have taken a leadership role in the development and promotion of the forestry industry Best Management Practices (BMPs) in Mississippi. MDEQ is

designated as the lead agency for implementing an urban polluted runoff control program through its Stormwater Program. Through this program, MDEQ regulates most construction activities. Mississippi Department of Transportation (MDOT) is responsible for implementation of erosion and sediment control practices on highway construction.

Due to this TMDL, projects within this watershed will receive a higher score and ranking for funding through the basin team process and Nonpoint Source Program described above.

6.2 Public Participation

This TMDL will be published for a 30-day public notice. During this time, the public will be notified by publication in both a statewide and local newspaper. The public will be given an opportunity to review the TMDL and submit comments. MDEQ also distributes all TMDLs at the beginning of the public notice to those members of the public who have requested to be included on a TMDL mailing list. TMDL mailing list members may request to receive the TMDL reports through either, email or the postal service. Anyone wishing to become a member of the TMDL mailing list should contact Kay Whittington at (601)961-5729 or Kay_Whittington@deq.state.ms.us.

At the end of the 30-day period, MDEQ will determine the level of interest in the TMDL and make a decision on the necessity of holding a public meeting. All comments received during the public notice period and at any public meeting become a part of the record of this TMDL. All comments will be considered in the ultimate completion of this TMDL for submission of this TMDL to EPA Region 4 for final approval.

DEFINITIONS

Aggradation: The raising of the bed of a watercourse by the deposition of sediment.

Allocations: That portion of a receiving water's loading capacity that is attributed to one of its existing or future pollution sources (nonpoint or point) or to natural background sources.

Ambient Stations: A network of fixed monitoring stations established for systematic water quality sampling at regular intervals, and for uniform parametric coverage over a long-term period.

Anthropogenic: Pertains to the [environmental] influence of human activities.

Assimilative Capacity: The amount of contaminant load that can be discharged to a specific stream or river without violating the provisions of the *State of Mississippi Water Quality Criteria for Intrastate, Interstate, and Coastal Waters and Water Quality* regulations. Assimilative capacity is the extent to which a body of water can receive wastes without significant deterioration of beneficial uses.

Background: Ambient pollutant concentrations due to natural sources, nearby sources other than the one currently under consideration, and unidentified anthropogenic sources.

Background Levels: Levels representing the chemical, physical, and biological conditions that would result from natural geomorphological processes such as weathering or dissolution.

Bank Full Stage: Stage of flow at which a stream fills its channel up to level of its bank. Recurrence interval averages 1.5 to 2 years.

Bedload Sediment: Portion of sediment load transported downstream by sliding, rolling, bouncing along the channel bottom. Generally consists of particles >1 mm.

Best Management Practices (BMPs): (1) The methods, measures, or practices selected by an agency to meet its nonpoint source control needs. BMPs include but are not limited to structural and nonstructural controls and operation and maintenance procedures. BMPs can be applied before, during, or after pollution-producing activities to reduce or eliminate the introduction of pollutants into receiving waters. (2) Methods have been determined to be the most effective, practical means of preventing or reducing pollution from nonpoint sources.

Calibration: Testing and tuning of a model to a set of field data. Also includes minimization of deviations between measured field conditions and output of a model by selecting appropriate model coefficients.

Channel: (1) A natural stream that conveys water; a ditch or channel excavated for the flow of water. (2) The water-filled groove through which runoff water flows. In a narrow valley the channel may include the entire valley floor, but ordinarily it occupies only a small fraction of the valley.

Channel Improvement: The improvement of the flow characteristics of a channel by clearing, excavation, realignment, lining, or other means in order to increase its capacity. Sometimes used to connote channel stabilization.

Channel Stabilization: Erosion prevention and stabilization of velocity distribution in a channel using jetties, drops, revetments, vegetation, and other measures.

Channelization: Straightening and deepening streams so that water will move faster, a marsh-drainage tactic that can interfere with waste assimilation capacity, disturb fish and wildlife habitats, and aggravate flooding.

Clean Sediment: Sediment that is not contaminated by chemical substances. Pollution caused by clean sediment refers to the quantity of sediment, as opposed to the presence of pollutant-contaminated sediment.

Critical Condition: The critical condition can be thought of as the “worst case” scenario of environmental conditions in the water body in which the loading expressed in the TMDL for the pollutant of concern will continue to meet water quality standards. Critical conditions are the combination of environmental factors (e.g., flow, temperature, etc.) that results in attaining and maintaining the water quality criterion and has an acceptably low frequency of occurrence.

Cross-Sectional Area: Wet area of a waterbody normal to the longitudinal component of the flow.

Daily Discharge: The discharge of a pollutant measured during a 24-hour period that reasonably represents the day for purposes of sampling. For pollutants with limitations expressed in units of mass, the daily discharge is calculated as the total mass of the pollutant discharged over the day. For pollutants with limitations expressed in other units of measurement, the daily discharge is calculated as the average measurement of the pollutant over the day.

Designated Use: (1) Those uses specified in water quality standards for each water body or segment whether or not they are being attained. (2) Those water uses identified in state water quality standards which must be achieved and maintained as required under the Clean Water Act.

Discharge Monitoring Report: Report of effluent characteristics submitted by a NPDES permitted facility.

Dissolved Solids: (1) The total amount of dissolved materials, organic and inorganic, contained in water or wastes. Excessive dissolved solids can make water unsuitable for industrial uses, unpalatable for drinking, and even cathartic. Potable water supplies must have dissolved solid content from 20 to 1000 mg/l, but sources which have more than 500 mg/l are not recommended by the U.S. Public Health Service. (2) Disintegrated organic and inorganic material in water. Excessive amounts make water unfit to drink or use in industrial processes.

Diurnal: Recurring daily. Diurnal indicates variations following a distinctive pattern and recurring from day to day.

Dynamic Model: A mathematical formulation describing and simulating the physical behavior of a system or a process and its temporal variability.

Ecoregion: A physical region that is defined by its ecology, which includes meteorological factors, elevation, plant and animal speciation, landscape position, and soils.

Effective Discharge: The channel-forming discharge or discharge which moves the most sediment. This value is obtained by combining flow frequency data with sediment transport data.

Effluent: (1) Any solid, liquid, or gas which enters the environment as a by-product of a man-oriented process. The substances that flow out of a designated source. Effluent, effluence, and efflux have the same meaning. (2) Wastewater – treated or untreated – that flows out of a treatment plant, sewer, or industrial outfall. Generally refers to wastes discharged into surface waters.

Effluent Standards and Limitations: All State or Federal effluent standards and limitations on quantities, rates, and concentrations of chemical, physical, biological, and other constituents to which a waste or wastewater discharge may be subject under the Federal Act or the State law. This includes, but is not limited to, effluent limitations, standards of performance, toxic effluent standards and prohibitions, pretreatment standards, and schedules of compliance.

Flood Plain: (1) The lowland and relatively flat areas adjoining inland and coastal waters and other floodprone areas such as offshore islands, including at a minimum, the area subject to a one percent or greater chance of flooding in any given year. The base floodplain shall be used to designate the 100-year floodplain (one percent chance floodplain). The critical action floodplain is defined as the 500-year floodplain (0.2 percent chance floodplain). (2) The portion of a river valley that becomes covered with water when the river overflows its banks at flood stage. (3) The flat or nearly flat land along a river or stream or in a tidal area that is covered by water during a flood.

Fluvial Geomorphology: The study of landforms and processes associated with rivers.

Geomorphology: The study of the Earth's landscapes and landforms, the processes by which the landforms originated, their age, and the nature of the materials underlying them.

Gully Erosion: (1) Severe erosion in which trenches are cut to a depth greater than 30 centimeters (1 ft). Generally, ditches deep enough to cross with farm equipment are considered gullies. (2) The widening, deepening, and cutting back of small channels and waterways due to erosion.

Impaired Water body: Any water body that does not attain water quality standards due to an individual pollutant, multiple pollutants, pollution, or an unknown cause of impairment.

Surface Runoff: Precipitation, snow melt, or irrigation in excess of what can infiltrate the soil surface and be stored in small surface depressions; a major transporter or nonpoint source pollutants.

Load Allocation (LA): The portion of a receiving water's loading capacity attributed either to one of its existing or future nonpoint sources of pollution or to natural background sources. Load allocations are best estimates of the loading, which may range from reasonably accurate estimates to gross allotments, depending on the availability of data and appropriate techniques for predicting the loading. Wherever possible, natural and nonpoint source loads should be distinguished.

Loading: The portion of a receiving water's loading capacity attributed either to one of its existing or future nonpoint sources of pollution or to natural background sources. Load allocations are best estimates of the loading, which may range from reasonably accurate estimates to gross allotments, depending on the availability of data and appropriate techniques for predicting the loading. Wherever possible, natural and nonpoint source loads should be distinguished.

Mass Wasting: Downslope transport of soil and rocks due to gravitational stress.

NPDES Permit: An individual or general permit issued by the MDEQ Permit Board pursuant to regulations adopted by the Commission under Mississippi Code Annotated (as amended) § 49-17-17 and § 49-17-29 for discharges into State waters.

Narrative Criteria: Nonquantitative guidelines that describe the desired water quality goals.

Natural Waters: Flowing water within a physical system that has developed without human intervention, in which natural processes continue to take place.

Nonpoint Source: The pollution from sources which generally are not controlled by establishing effluent limitations under sections 301, 302, and 402. Nonpoint source pollutants are not traceable to a discrete identifiable origin, but generally result from land runoff, precipitation, drainage, or seepage. This water may contain pollutants that come from land use activities such as agriculture, construction, silviculture, surface mining, disposal of wastewater, hydrologic modifications, and urban development.

Numeric Target: A measurable value determined for the pollutant of concern which, if achieved, is expected to result in the attainment of water quality standards in the listed water body.

Phased Approach: Under the phased approach to TMDL development, load allocations and wasteload allocations are calculated using the best available data and information recognizing the need for additional monitoring data to accurately characterize sources and loadings. The phased approach is typically employed when nonpoint sources dominate. It provides for the implementation of load reduction strategies while collecting additional data.

Point Source: Pollution from a stationary location or fixed facility from which pollutants are discharged or emitted. Pollution from any single identifiable source, e.g., a pipe, ditch, ship, ore pit, or factory smokestack.

Pollutant: Includes, but not limited to, any element, substance, compound, or mixture, including disease-causing agents, which after release into the environment and upon exposure, ingestion, inhalation, or assimilation into any organism, either directly from the environment or indirectly by ingestion through food chains, will or may be reasonably be anticipated to cause death, disease, behavioral abnormalities, cancer, genetic mutation, physiological malfunctions (including malfunctions in reproduction) or physical deformations, in such organisms or their offspring; except that the term pollutant or contaminant shall not include petroleum, including crude oil or any fraction thereof which is not otherwise specifically listed or designated as a hazardous substance under subparagraphs (A) through (F) of paragraph (14) and shall not include natural gas, liquefied natural gas, or synthetic gas of pipeline quality (or mixtures of natural gas and such synthetic gas).

Pollution: Generally, the presence of matter or energy whose nature, location, or quantity produces undesired environmental effects. Under the Clean Water Act, for example, the term is defined as man-made or man-induced alteration of the physical, biological, and radiological integrity of water. Other pollution related terms include: agricultural pollution, air pollution, indoor air pollution, industrial waste pollution, manmade air pollution, natural pollution, noise pollution, oil pollution, sewage pollution, soil pollution, thermal pollution, water pollution, and wood burning stove pollution.

Reference Sites: Water bodies that are representative of the characteristics of the region and subject to minimal human disturbance.

Scouring: The removal of earth or rock by the action of running water or of a glacier.

Sediment: (1) The unconsolidated inorganic and organic material that is suspended in and being transported by surface water, or has settled out and deposited into beds. (2) Soil, sand, and minerals washed from land into water, usually after rain. They pile up in reservoirs, rivers, and harbors, destroying fish and wildlife habitat, and clouding the water so that sunlight cannot reach aquatic plants. Careless farming, mining, and building activities will expose sediment materials, allowing them to wash off the land after rainfall.

Sediment Delivery: Contribution of transported sediment to a particular location or part of a landscape.

Sediment Production: Delivery of colluvium or bedrock from hillslope to stream channel. The production rate is evaluated as the sum of the rates of colluvial bank erosion and sediment transport across channel banks.

Sediment Yield: The quantity of sediment arriving at a specific location.

Sedimentation: Process of deposition of waterborne or windborne sediment or other material; also refers to the infilling of bottom substrate in a waterbody by sediment (siltation).

Sheet Erosion: Also Sheetwash. Erosion of the ground surface by unconcentrated (i.e. not in rills) overland flow.

Sheetwash: Also Sheet Erosion. Erosion of the ground surface by unconcentrated (i.e. not in rills) overland flow.

Stage: The height of a water surface above an established datum plane.

Stream Restoration: Various techniques used to replicate the hydrological, morphological, and ecological features that have been lost in a stream due to urbanization, farming, or other disturbance.

Surface Runoff: Precipitation, snow melt, or irrigation in excess of what can infiltrate the soil surface and be stored in small surface depressions; a major transporter or nonpoint source pollutants.

Suspended Solids: Organic and inorganic particles (sediment) suspended in and carried by a fluid (water). The suspension is governed by the upward components of turbulence, currents, or colloidal suspension. Suspended-sediment usually consists of particles <0.1 mm, although size may vary according to current hydrological conditions. Particles between 0.1 mm and 1 mm may move as suspended or be deposited (bedload).

Thalweg: Deepest part of a stream channel.

Topography: The physical features of a geographic surface area including relative elevations and the positions of natural and man-made features.

Total Maximum Daily Load or TMDL: (1) The total allowable pollutant load to a receiving water such that any additional loading will produce a violation of water quality standards. (2) The sum of the individual waste load allocations and load allocations. A margin of safety is included with the two types of allocations so that any additional loading, regardless of source, would not produce a violation of water quality standards.

Turbidity: (1) A measure of opacity of a substance; the degree to which light is scattered or absorbed by a fluid. (2) A cloudy condition in water due to suspended silt or organic matter.

Waste: Useless, unwanted, or discarded material resulting from (agricultural, commercial, community, and industrial) activities. Wastes include solids, liquids, and gases.

Wasteload Allocation (WLA): (1) The portion of a receiving water's loading capacity that is allocated to one of its existing or future point sources of pollution. WLAs constitute a type of water quality based effluent limitation. (2) The portion of a receiving water's total maximum daily load that is allocated to one of its existing or future point sources of pollution. (3) The maximum load of pollutants each discharger of waste is allowed to release into a particular waterway. Discharge limits are usually required for each specific water quality criterion being, or expected to be, violated. The portion of a stream's total assimilative capacity assigned to an individual discharge.

Water Quality Criteria: Specific levels of water quality which, if reached, are expected to render a body of water suitable for its designated use. The criteria are based on specific levels of pollutants that would make the water harmful if used for drinking, swimming, farming, fish production, or industrial processes. Water quality criteria are comprised of numeric and narrative criteria. Numeric criteria are scientifically derived ambient concentrations developed by EPA or States for various pollutants of concern to protect human health and aquatic life. Narrative criteria are statements that describe the desired water quality goal.

Water Quality Standards: (1) Provisions of State or Federal law which consist of a designated use or uses for the water quality criteria for such waters based upon such uses. Water quality standards are to protect the public health or welfare, enhance the quality of water, and serve the purposes of the Clean Water Act. (2) A law or regulation that consists of the beneficial designated use or uses of a water body, the numeric and narrative water quality criteria that are necessary to protect the use or uses of that particular water body, and an antidegradation statement. (3) State-adopted and EPA-approved ambient standards for water bodies. The standards prescribe the use of the water body and establish the water quality criteria that must be met to protect designated uses.

Waters of the State: All waters within the jurisdiction of this State, including all streams, lakes, ponds, wetlands, impounding reservoirs, marshes, watercourses, waterways, wells, springs, irrigation systems, drainage systems, and all other bodies or accumulations of water, surface and underground, natural or artificial, situated wholly or partly within or bordering upon the State, and such coastal waters as are within the jurisdiction of the State, except lakes, ponds, or other surface waters which are wholly landlocked and privately owned, and which are not regulated under the Federal Clean Water Act (33 U.S.C.1251 et seq.).

Watershed: (1) The land area that drains (contributes runoff) into a stream. (2) The land area that drains into a stream; the watershed for a major river may encompass a number of smaller watersheds that ultimately combine at a common delivery point.

ABBREVIATIONS

ARS.....	Agricultural Research Service
BMP	Best Management Practice
CWA	Clean Water Act
CWPRU	Channel and Watershed Processes Research Unit
EPA.....	Environmental Protection Agency
LA	Load Allocation
MARIS.....	Mississippi Automated Resource Information Service
MDEQ.....	Mississippi Department of Environmental Quality
MFC	Mississippi Forestry Commission
MOS.....	Margin of Safety
MS4.....	Municipal Separate Storm Sewer System
NPDES.....	National Pollution Discharge Elimination System
NRCS	Natural Resource Conservation Service
NSL.....	National Sedimentation Laboratory
SSC	Suspended Sediment Concentration
TMDL.....	Total Maximum Daily Load
TSS.....	Total Suspended Solids
USGS	United States Geological Survey
WLA	Wasteload Allocation
WWTP	Wastewater Treatment Plant

REFERENCES

- Hupp, C.R. 1992. Riparian Vegetation Recovery Patterns Following Stream Channelization: A Geomorphic Perspective. *Ecology*. 73(4): 1209-1226.
- Kuhnle, Roger and Andrew Simon. 2000. Evaluation of Sediment Transport Data for Clean Sediment TMDLs. *National Sedimentation Laboratory Report 17*. Oxford, MS. United States Department of Agriculture. Agricultural Research Service. National Sedimentation Laboratory. Channel and Watershed Processes Research Unit.
- Lee, C.C. 1998. *Environmental Engineering Dictionary*. Third Edition. Government Institutes, Inc. Rockville, MD.
- MDEQ, MSWCC, and USDA SCS. 1994. *Planning and Design Manual for the Control of Erosion, Sediment, and Stormwater*.
- MDEQ. 2008. *Stressor Identification for Bahala Creek*. Office of Pollution Control. Jackson, MS.
- MDEQ. 2008. *Stressor Identification for Big Creek*. Office of Pollution Control. Jackson, MS.
- MDEQ. 2008. *Stressor Identification for Campbell Creek*. Office of Pollution Control. Jackson, MS.
- MDEQ. 2008. *Stressor Identification for Cane Creek*. Office of Pollution Control. Jackson, MS.
- MDEQ. 2008. *Stressor Identification for Clabber Creek*. Office of Pollution Control. Jackson, MS.
- MDEQ. 2008. *Stressor Identification for Coffee Bogue Creek*. Office of Pollution Control. Jackson, MS.
- MDEQ. 2008. *Stressor Identification for Conehatta Creek*. Office of Pollution Control. Jackson, MS.
- MDEQ. 2008. *Stressor Identification for Dabbs Creek*. Office of Pollution Control. Jackson, MS.
- MDEQ. 2008. *Stressor Identification for Eutacutachee Creek*. Office of Pollution Control. Jackson, MS.
- MDEQ. 2008. *Stressor Identification for Halbert Branch*. Office of Pollution Control. Jackson, MS.
- MDEQ. 2008. *Stressor Identification for Hanging Moss Creek*. Office of Pollution Control. Jackson, MS.

- MDEQ. 2008. *Stressor Identification for Hughes Creek*. Office of Pollution Control. Jackson, MS.
- MDEQ. 2008. *Stressor Identification for Juniper Creek*. Office of Pollution Control. Jackson, MS.
- MDEQ. 2008. *Stressor Identification for Lobutchka Creek*. Office of Pollution Control. Jackson, MS.
- MDEQ. 2008. *Stressor Identification for Pinishook Creek*. Office of Pollution Control. Jackson, MS.
- MDEQ. 2008. *Stressor Identification for Rhodes Creek*. Office of Pollution Control. Jackson, MS.
- MDEQ. 2008. *Stressor Identification for Richland Creek*. Office of Pollution Control. Jackson, MS.
- MDEQ. 2008. *Stressor Identification for Shockaloo Creek*. Office of Pollution Control. Jackson, MS.
- MDEQ. 2008. *Stressor Identification for Silver Creek*. Office of Pollution Control. Jackson, MS.
- MDEQ. 2008. *Stressor Identification for Strong River*. Office of Pollution Control. Jackson, MS.
- MDEQ. 2008. *Stressor Identification for Tallabogue Creek*. Office of Pollution Control. Jackson, MS.
- MDEQ. 2008. *Stressor Identification for Tallahaga Creek*. Office of Pollution Control. Jackson, MS.
- MDEQ. 2008. *Stressor Identification for Tuscolameta Creek*. Office of Pollution Control. Jackson, MS.
- MDEQ. 2006b. *Mississippi List of Water Bodies, Pursuant to Section 303(d) of the Clean Water Act*. Office of Pollution Control. Jackson, MS.
- MDEQ. 2003a. *State of Mississippi Water Quality Criteria for Intrastate, Interstate, and Coastal Waters*. Office of Pollution Control. Jackson, MS.

- MDEQ. 2003b. *Development and Application of the Mississippi Benthic Index of Stream Quality (M-BISQ)*. Prepared by Tetra Tech, Inc., Owings Mills, MD, for the Mississippi Department of Environmental Quality, Office of Pollution Control, Jackson, MS. (For further information on this document, contact Randy Reed at 601-961-5158).
- MDEQ. 2003c. *James Creek Total Maximum Daily Load for Biological Impairment due to Sediment*. Office of Pollution Control. Jackson, MS.
- MFC. 2000. *Mississippi's BMPs: Best Management Practices for Forestry in Mississippi*. Publication # 107.
- MFC. 2004. *2003 BMP Implementation Survey – November 2002 to July 2003*. Mississippi's Voluntary Silvicultural Best Management Practices Implementation Monitoring Program.
- NRCS. 2000. *Field Office Technical Guide Transmittal No. 61*.
- Rinaldi, M. and Simon, A. 1998. Adjustments of the Arno River, Central Italy. *Geomorphology*. (22):57-71
- Rosgen, D.L. 1985. A Classification of Natural Rivers. *Catena*. (22):169-199.
- Rosgen, D.L. 1996. *Applied River Morphology*. Wildland Hydrology. Pagosa Springs, CO.
- Simon, Andrew. 1989. A Model of Channel Response in Disturbed Alluvial Channels. *Earth Surface Processes and Landforms*. 14(1):11-26.
- Simon, Andrew and C.R. Hupp. 1986. Channel Evolution in Modified Tennessee Channels. Proceedings of the *Fourth Federal Interagency Sedimentation Conference*. March 1986. Las Vegas, NV. v. 2, Section 5, 5-71 to 5-82.
- Simon, Andrew and C.R. Hupp. 1992. Geomorphic and Vegetative Recovery Processes along Modified Stream Channels of West Tennessee. *U.S. Geological Survey Open-File Report*. 91-502.
- Simon, A., Bingner, R.L., Langendoen, E.L., and Alonso, C.V. 2002a. *Actual and Reference Sediment Yields for the James Creek Watershed--Mississippi*. Research Report No. 31, USDA-ARS National Sedimentation Laboratory, xvi+185 pp.
- Simon, Andrew, Roger A. Kuhnle, and Wendy Dickerson. 2002b. "Reference" and "Impacted" Rates of Suspended-Sediment Transport for Use in Developing Clean Sediment TMDLs: Mississippi and the Southeastern United States. *National Sedimentation Laboratory Report 25*. Oxford, MS. United States Department of Agriculture. Agricultural Research Service. National Sedimentation Laboratory. Channel and Watershed Processes Research Unit.